



**WORLD'S BEST
ALLOY BULLBARS**

East Coast Bullbars (ECB Pty Ltd)

Tel: 07 3897 5700

Fax: 07 3283 1168

ecb@ecb.com.au www.ecb.com.au

29 Snook St
Clontarf QLD 4019
Australia

Po Box 122
Margate QLD 4019
Australia

7T52S / 7T56S

REPLACES: 10.05.08

REVISED: 15.07.10

FITTING INSTRUCTIONS

TOYOTA HIACE 11/89-02/05 (NOT SBV MODEL) VEHICLE FRONTAL PROTECTION SYSTEM (VFPS)

Check installation hardware before commencing.

Note: Treat all drilled holes with rust inhibitor.

Note: Cut outs in steel mounting angles are to fit around air conditioning brackets if air-conditioning is fitted.

1. Insert drill into rear hole on chassis. **See figure 1.** Drill through into chassis and through top of chassis.
2. Using 3/8 x 5 ½ bolt (Supplied) attach steel mounting angle (supplied) to chassis. **See figure 2.** With 3/8 x 5 bolt inserted through chassis attach alloy plate to top of chassis over bolt. Use 3/8 nuts and washers (supplied). **FINGER TIGHTEN ONLY.**
3. Align steel mounting angle with front chassis holes and square. Insert drill into front hole and drill through top of chassis. Once through top of chassis ensure alloy plate is aligned and pass drill through alloy plate.
4. Insert 3/8 x 5 bolt (supplied) through chassis and alloy plate (supplied). Attach nuts and washers (supplied). **FINGER TIGHTEN ONLY. See figure 3.**
5. Repeat for other side.
6. Check steel mounting angles are aligned, square and centred on vehicle. Check distance apart is sufficient for protection bar to mount on outside of steel mounting angles. **TIGHTEN ALL BOLTS AND NUTS. See figures 4 and 5.**
7. Position protection bar on outside of steel mounting angles. Insert 3/8 x 1 ½ bolts and flat washers (supplied) from outside. Attach nuts and washers (supplied) on inside of steel mounting angles. **See figure 6.**
Note: Depending on the position of the receiver dryer on the passenger side chassis, it may be necessary to loosen receiver dryer bracket and move receiver dryer upwards to clear protection bar.
8. Align protection bar with vehicle. **See side views figure 7 TIGHTEN ALL BOLTS.**

Note: When fitting/refitting the licence plate to the vehicle, ensure there is no obstruction to licence plate vision in accordance with local authorities. If required relocate licence plate to an alternate location.

Further VFPS Notes:

- a) Do not attach VFPS to the vehicle using anchorages not intended for this purpose (e.g. engine mounting bolts).
- b) Do not use this product for any vehicle make or model, other than those specified by the VFPS manufacturer.
- c) Do not remove the plaque or label from the VFPS.
- d) Do not modify the structure of the VFPS in any way.
- e) No accessory or fitment should project forward of the VFPS forward profile.
- f) **ENSURE THESE INSTRUCTIONS ARE LEFT WITH VEHICLE OWNER AND/OR OPERATOR.**

IMPORTANT INFORMATION

Periodically check bolts and nuts for correct tightness, especially if travelling on rough roads



East Coast Bullbars (ECB Pty Ltd)

Tel: 07 3897 5700

Fax: 07 3283 1168

ecb@ecb.com.au www.ecb.com.au

29 Snook St
Clontarf QLD 4019
Australia

Po Box 122
Margate QLD 4019
Australia

**WORLD'S BEST
ALLOY BULLBARS**

FITTING KIT

2 – Steel mounting angles.
2 – Alloy plates.
4 – 3/8 x 5 1/2 bolts/nuts.
4 – 3/8 x 1 1/2 bolts/nuts.
16 – 3/8 flat washers.
8 – 3/8 spring washers.



Figure 1 – Passenger side shown

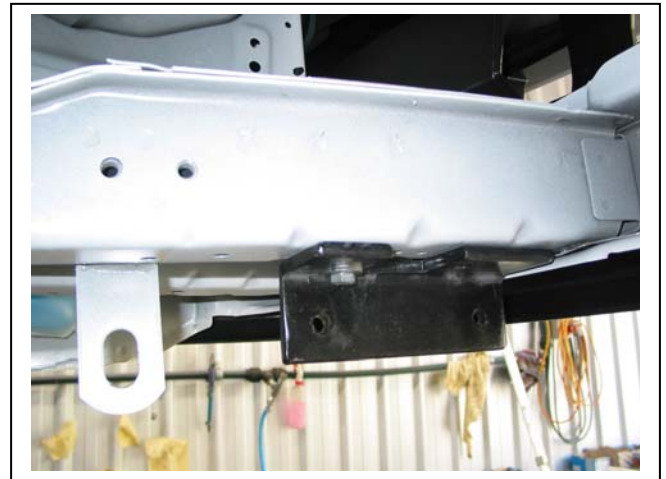


Figure 2 – Passenger side shown from inside

Alloy plate on top of chassis

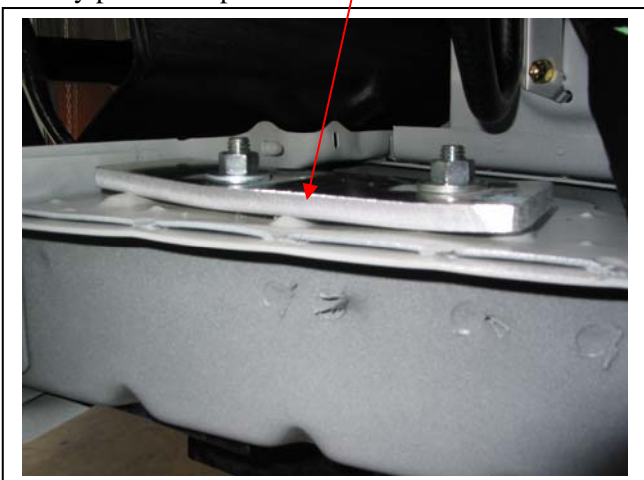


Figure 3 – Drivers side shown from inside

Steel mounting angles

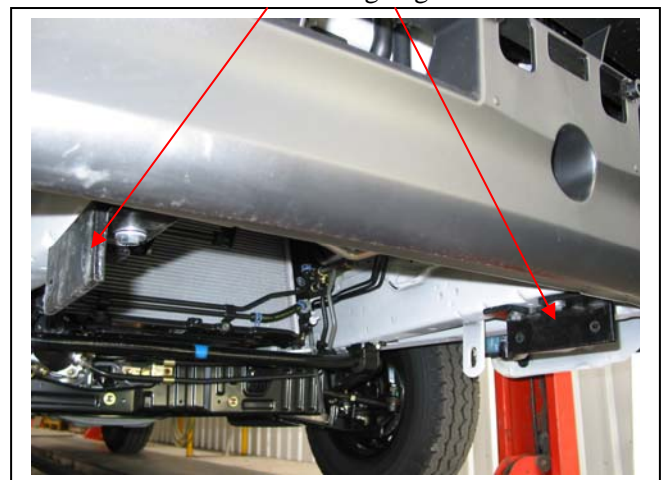


Figure 4



**WORLD'S BEST
ALLOY BULLBARS**

East Coast Bullbars (ECB Pty Ltd)

Tel: 07 3897 5700

Fax: 07 3283 1168

ecb@ecb.com.au www.ecb.com.au

29 Snook St
Clontarf QLD 4019
Australia

Po Box 122
Margate QLD 4019
Australia

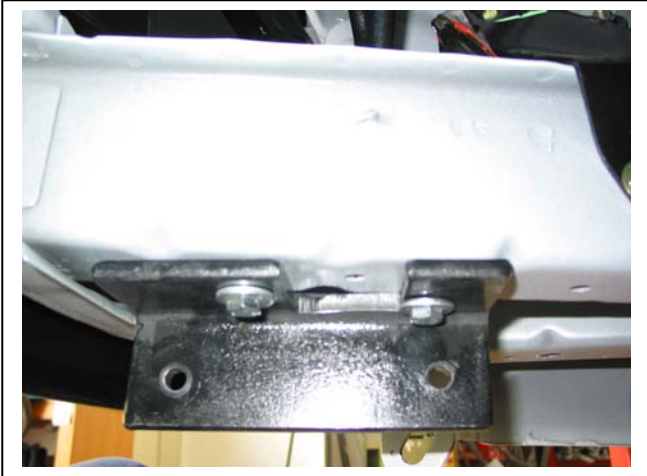


Figure 5 – Drivers side shown from inside



Figure 6 – Passenger side shown from inside



Figure 7 – Type 7 shown



East Coast Bullbars (ECB Pty Ltd)

Tel: 07 3897 5700

Fax: 07 3283 1168

ecb@ecb.com.au www.ecb.com.au

29 Snook St
Clontarf QLD 4019
Australia

Po Box 122
Margate QLD 4019
Australia

WORLD'S BEST
ALLOY BULLBARS

We value your comments

Dear Fitter,

ECB would like to know how you went with the installation of this product. We value your comment and may need to contact you to clarify some details so please complete your contact details clearly.

We would appreciate if you could complete as many of the following details as possible.

Your Name:	Your contact No.
Product Part No.	Product Invoice No.
Product Description:	Make, model, and year of vehicle:
Product Work Order No.	Company your from/Company product purchased from:

Date of Fitment: ___/___/___

Was the fitting hardware supplied complete?

Yes

No

If no what was not supplied

Did the installation go well?

Yes

No

Please provide comments

Please draw diagrams if you need to.

Post to
Reply Paid 122
PO Box 122
Margate QLD 4019

Fax to
(07) 3283 1168



East Coast Bullbars (ECB Pty Ltd)

Tel: 07 3897 5700

Fax: 07 3283 1168

ecb@ecb.com.au www.ecb.com.au

29 Snook St
Clontarf QLD 4019
Australia

Po Box 122
Margate QLD 4019
Australia

WORLD'S BEST
ALLOY BULLBARS

DESPATCH CHECKLIST 7T52S / 7T56S

Work Order #	
Finish:	
Transport:	
Due Date:	

- 2 – Steel mounting angles.
- 2 – Alloy plates.
- 1 – Bolt Kit

**See other side of
this page for
photos of all
mounts**



Is this product “the best it can be” Yes _____ / _____
Wrapper’s initials / Checker initials
 If NO fix before continuing

All parts checked and completed by:

Nut and bolts: _____ Date __/__/__

Order control: _____ Date __/__/__

Final wrap check: _____ Date __/__/__



**WORLD'S BEST
ALLOY BULLBARS**

East Coast Bullbars (ECB Pty Ltd)

Tel: 07 3897 5700

Fax: 07 3283 1168

ecb@ecb.com.au www.ecb.com.au

29 Snook St
Clontarf QLD 4019
Australia

Po Box 122
Margate QLD 4019
Australia

